

YOUR CRYSTAL EXECUTIVE PLAN

Here's your map to becoming a Crystal Executive. Fill in your new team members' names. To become a Crystal Executive, you need to personally develop five people on each team leg (right and left) then help those ten people become Consultants. If you complete this within 180 days of becoming an Associate, you will achieve Crystal Executive status.



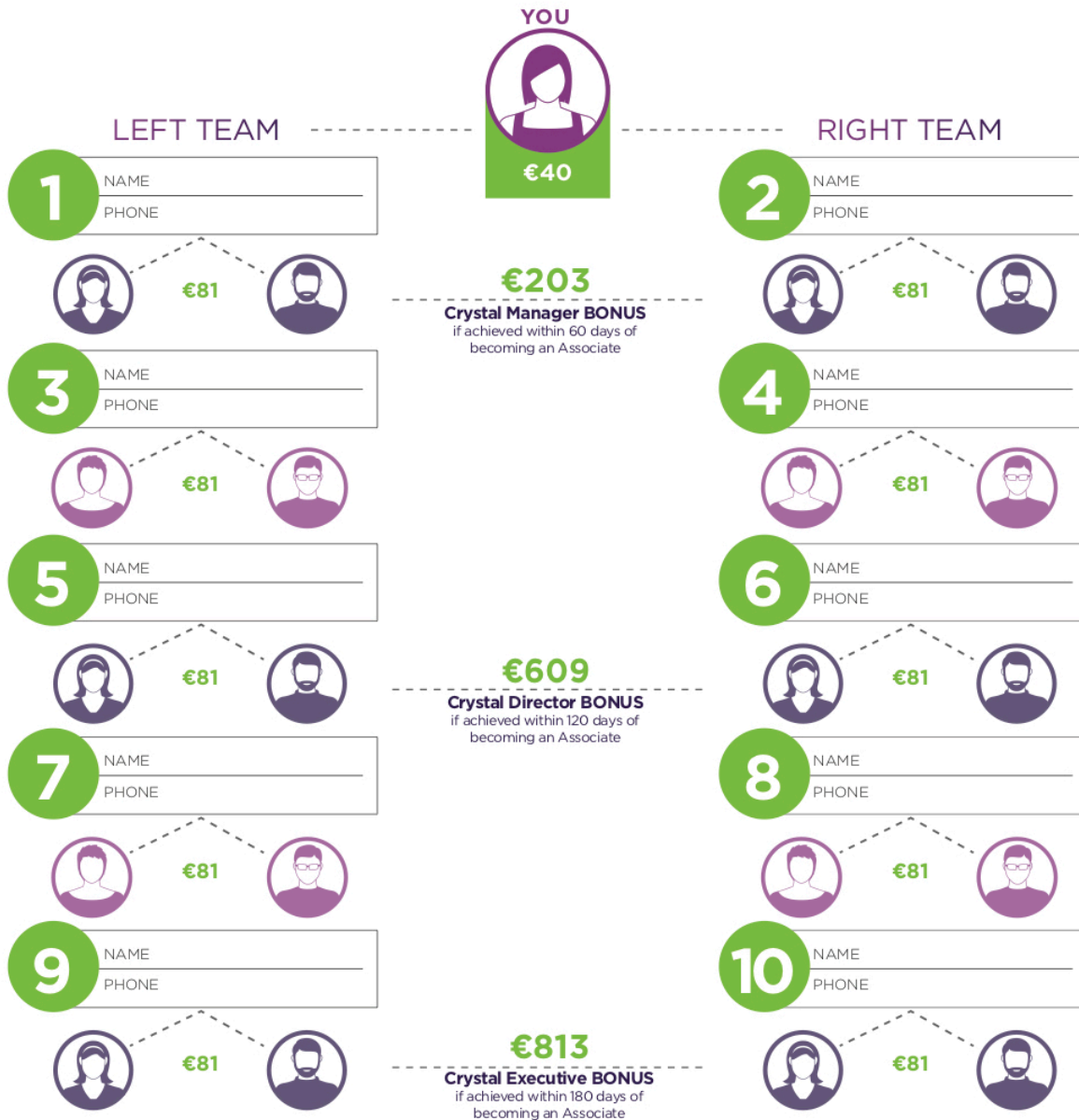
**YOU SHARE
THEY SHARE
REPEAT**

x5

- + €40 **Consultant Bonus**
- + €203 **Crystal Manager Bonus** (achieve within 60 days)
- + €609 **Crystal Director Bonus** (achieve within 120 days)
- + €813 **Crystal Executive Bonus** (achieve within 180 days)
- + €810 **Consultant Development Bonus** (€81 each) (maximum 20)

= €2,475 in Bonus Money!**

(Consultant to Crystal Executive in 180 days)



**Associates participating in the Crystal Challenge outside of their 180-day join date from becoming an Associate period do not qualify for the €813 Crystal Executive Bonus. The €2,475 bonus can only be achieved if Crystal Manager is achieved within 60 days of becoming an Associate, Crystal Director is achieved within 120 days of becoming an Associate, and Crystal Executive is achieved within 180 days of becoming an Associate.

Earning levels for Isagenix Independent Associates that appear in this publication are examples and should not be construed as typical or average. Income level achievements are dependent upon the individual Associate's business skills, personal ambition, time, commitment, activity and demographic factors. For average earnings, see the Isagenix Independent Associate Earnings Statement found at www.IsagenixEarnings.com.

Amounts shown in this document are converted from USD to EUR using a conversion rate of 1.230. Please note that this is not a fixed exchange rate, the amounts are rounded down and are for indicative purposes only.